



Albany HS8010P & HS8020P

Heavy-duty operation for interior and exterior applications

Fast opening and closing speeds

Fast speeds improve operation and traffic flow while limiting air infiltration and reducing energy costs.

Self-resetting

Door curtain is accident forgiving and can self-reset after an accidental impact.

Tight seals

Weather tight seals around full door perimeter reduce energy loss and keep out dust, dirt and humidity.

Flexible door curtain

Flexible curtain with no rigid parts and soft bottom door edge helps to ensure safety for personnel and equipment.

HEAVY DUTY

MAXIMUM SAFETY

Albany HS8010P & Albany HS8020P high-speed doors are designed for exterior and interior openings in medium-sized heavy-duty operations. The Albany HS series doors feature a flexible door curtain for maximum safety, tight seals for protection against humidity, dust and dirt, fast speeds for improved traffic flow, and a unique direct drive system for smooth, consistent operation.



Safe and efficient operation

The Albany HS8010P & Albany HS8020P high-speed doors provide superior protection and improved efficiency for personnel and equipment. The flexible door curtain is designed without rigid components and features a soft bottom edge that yields when contacted, eliminating damage to products and protecting workers from injury. Fast opening speeds of up to 96" per second also ensure efficient operations in high traffic environments.

Superior sealing and wind resistance

When closed, the Albany HS8010P & Albany HS8020P seal tightly, maintaining interior temperatures, minimizing energy loss and keeping out dust, dirt and humidity. The patented, UHMW plastic side guides firmly grip the innovative zipper component that runs along the edge of the door panel, preventing air leakage and maintaining pleasant indoor conditions.

The Albany HS8020P is designed to withstand wind loads of up to class 5 (EN12424) with reinforced side guides for advanced durability. The unique direct drive system also ensures continuous operation and securely closes the door in high wind loads.

Accident forgiveness

When a door faces demanding conditions, accidental collisions are almost inevitable. The Albany HS8010P & Albany HS8020P have been designed to withstand accidental impact and can be easily reset for continued operation. When hit, the door curtain break away with no damage or incident and resets automatically into the side guides. This reliable resetting feature eliminates downtime, keeping people and business moving.

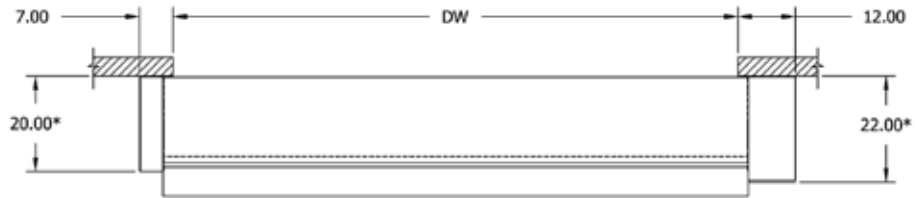
Key advantages

- Energy and cost savings
- User safety
- Low total cost of ownership
- Increased operational efficiency
- No operational down time
- Regulatory compliance
- Use in extreme environments

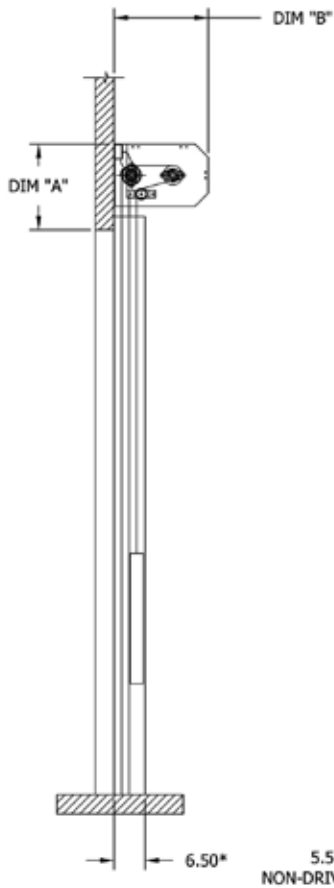
WITHOUT COVER



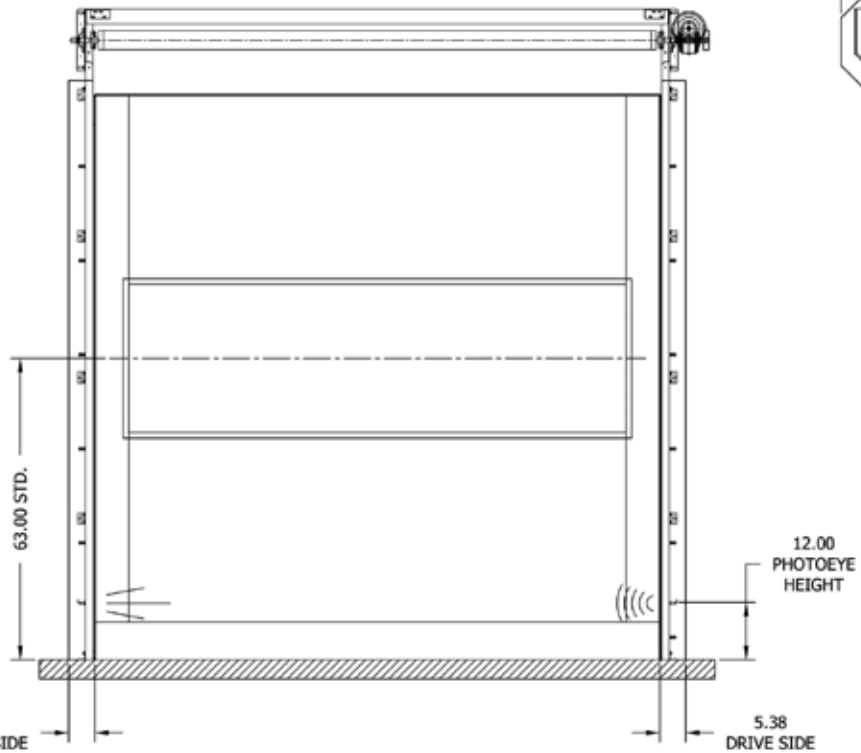
WITH COVER



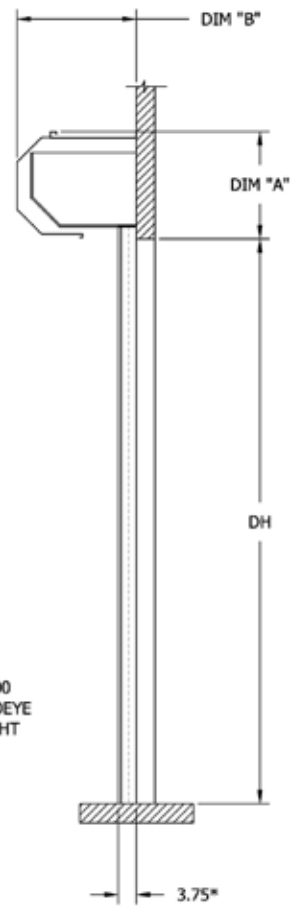
WITHOUT COVER



5.50
NON-DRIVE SIDE



WITH COVER



NOTE:
*FOREFRAME OPTION AVAILABLE.
INCREASE DIMENSIONS BY 3.00"

VARIABLE DIMENSIONS			
OPTIONS	DIM A	DIM B	NOTES
LARGE COVERS	22.50"	25.00"	DH > 15FT
STANDARD COVERS	20.00"	20.00"	DH <= 15FT
NO COVERS, STANDARD LINTEL	20.00"	20.00"	
NO COVERS, REDUCED LINTEL	15.00"	20.00"	

Technical information

Door dimensions

Max Width	216 inches (5486 mm)
Max Height	216 inches (5486 mm)
Min Width	36 inches (915 mm)
Min Height	84 inches (2134 mm)

Speeds

Operating speed	Up to 96 in/sec
-----------------	-----------------

Wind resistance

Static wind load	Albany HS8010P - up to 95 mph Albany HS8020P - up to 110 mph
Static pressure load	Albany HS8010P - up to 23 psf Albany HS8020P - up to 32 psf

Door panel

PVC fabric panel	Blue 27 oz/yd ² PVC curtain standard. Other optional colors include black, grey, green, red, orange, yellow and white.
Vision section	Optional, 15" or 31" tall full width clear vision section
Windows	Optional, 24" x 24" clear windows

Safety features

Photo eye	Standard through-beam photo eye
Wireless safety system	No coil cord

Door components

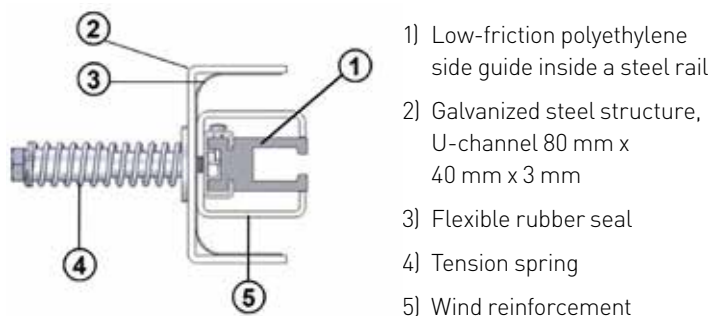
Side frames	Galvanized steel structural channel side guides Inner side guides in Polyethylene (PE-UHMS 1000)
Soft bottom edge	No rigid components. Includes wireless reversing sensor
Manual egress	Hand crank

Control and drive system

ACS100	Standard, variable frequency drive with soft start / soft stop and encoder
Input voltage	208V, 230V, 460V, 575V Motor 2.0-Hp, 3 phase, 50/60 Hz Protection NEMA 4, UL/cUL listed
Warranty terms	One year parts & labor

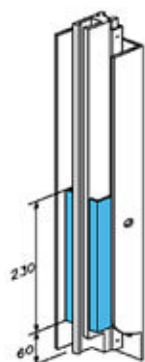
Side column

The side columns are part of the frame that also contains the header box. This frame is made of 3 mm thick galvanized steel tubes. The side columns are connected directly to the wall.

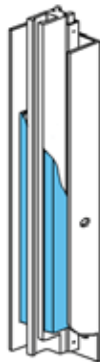


Wind resistance

A wind reinforcement is installed around the side guide to increase the wind load resistance and prevent the curtain from being pulled out of the side guides. The Albany HS8020P is designed for very high wind loads with flexible, spring-installed side guides.



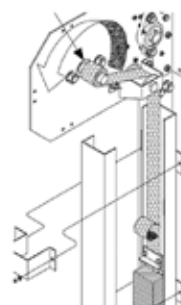
Albany HS8010P



Albany HS8020P

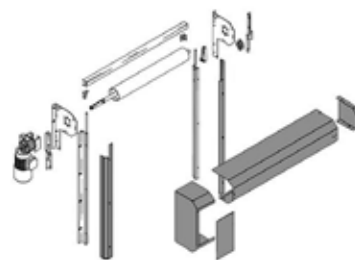
Fabric roll

The fabric roll is installed in the header box above the door curtain with a gear drive system that guides the door curtain up and down the tracks.



Header cover

An optional header box cover is available to enclose the fabric roll and/or the operator. Also the side columns can be equipped with covers.



Available curtain colors

Signal yellow RAL 1003	Moss green RAL 6005	White RAL 9010
Pure orange RAL 2004	Light grey RAL 7035	On request Other colors
Flame red RAL 3000	Chocolate brown RAL 8017	
Ultramarine blue RAL 5002	Jet black RAL 9005	



Entrematic offers a comprehensive range of products for industrial, commercial, institutional and residential applications, including sectional doors, loading dock equipment, high-performance doors, residential garage doors, pedestrian door automation and openers. Built on nearly 200 years of accumulated expertise, Entrematic is the preferred partner of distributors and the number one choice of end user customers, providing innovative products, technical expertise and a portfolio of industry-leading brands including Amarr, Kelley, Serco, Dynaco, Ditec and Albany. Entrematic, Amarr, Kelly, Serco, Normstahl, Dynaco, Ditec, Albany and EM, as words and logotypes, are examples of trademarks owned by Entrematic Group AB or companies within the Entrematic Group.

The Albany products are protected by worldwide registered patents. As part of its policy of continuous product development, Entrematic reserves the right to change the characteristics of its products or components without prior notice. Disclaimers: For a correct use of our products, please refer to our manual. Everything that is mentioned in this brochure is only valid under the terms of use in the user manual and on condition that the door was properly installed and maintained and has not undergone abuse nor neglect.

© Entrematic Group AB, 2018 Technical data subject to change without notice.

Albany Doors
Tel: 1-800-252-2691
info.us.albany@entrematic.com
albanydoors.us • albanydoors.ca

ENTRE/MATIC

