

**KELLEY®**

# **OPTIONS AND ACCESSORIES**

## **COMMON SIDE MEMBERS**

- Single side frame shared by adjacent units.
- Available on TS Series Rigid Frame Shelter, & FSR Series Foamside Shelter.

## **SPECIAL HEAD MEMBER**

- For attaching top front side frames to underside of building overhang or canopy.
- 1 1/4" square tube used in place of standard head frame.

## **METAL HOODS**

- Provides maximum overhead protection.
- 16-gauge galvanized steel with 2" gutter.
- Available in 18", 24" and 36" projections.

## **BOTTOM PADS**

- Seals gap between building foundation and trailer floor.
- Made of fabric-covered foam pad with wood backing.

## **Available Fabrics**



### **TS-55® SUPER FABRIC**

Heavy-duty polyester-based fabric with a polymer blend coating on both sides resulting in the highest puncture and tear resistance of any fabric in the industry.

### **40 OZ. HYPALON®**

Nylon woven base with a Hypalon coating on both sides.

### **40 OZ. VINYL**

Woven polyester base fabric with a vinyl coating on both sides.

### **25 OZ. URETHANE**

Nylon woven base with a vinyl coating and a surface coating of urethane.

### **22 OZ. VINYL**

Woven polyester-based fabric with a vinyl coating on both sides.

### **16 OZ. HYPALON®**

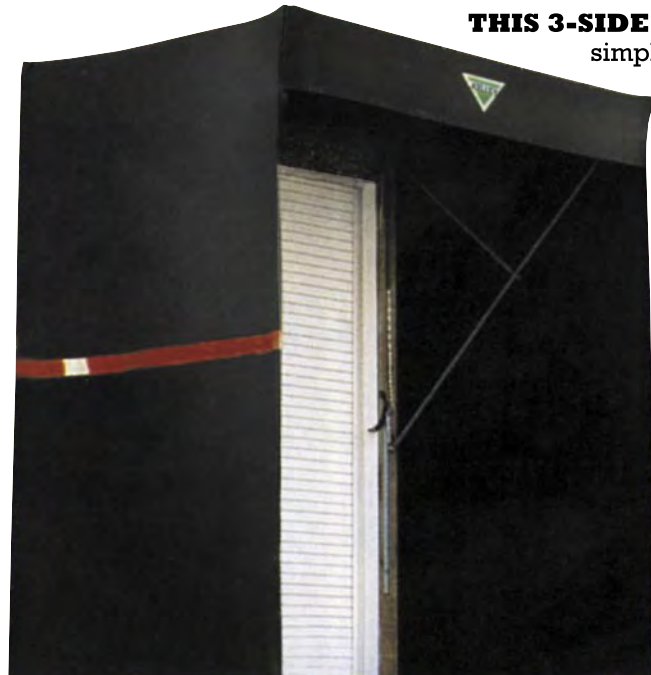
Nylon woven base with a Hypalon coating on both sides.

### **FLAME RETARDANT FABRIC**

Many of our fabrics offer optional flame retardant designs. These fabrics are engineered or tested to the strict standards of the California State Title 19 and NFPA-701. These flame retardant fabrics are designed to self extinguish a flame in two seconds or less once the source is removed.

**Note:** Not all fabrics are available in all colors. Please check with your local Kelley Distributor to verify color availability in your choice of fabric. Due to printing variances, actual fabric colors may differ.

## **Kelley RS600 Series Rail Shelter**



**THIS 3-SIDED FRAME**/3-sided cover rail shelter offers simple, one-person operation thanks to its spring-tensioned upper frame assembly. Expect long-lasting economical performance with 100% corrosion-resistant hardware.

## **Kelley RS700 Series Rail Shelter**



**FEATURING A DURABLE COATED-FABRIC COVER** supported by spring-tensioned frames, the Series 700 offers easy, one-person operation. Standard 4-sided frame construction is available with a 3- or 4-sided cover. The Series 700 is built with durable 100% corrosion-resistant hardware.

An SPX Dock Products Company

**KELLEY®**

1612 Hutton Dr., Suite 140 / Carrollton, TX 75006 / Tel: 800.558.6960 / Fax: 972.389.4766  
email: [kelleysales@dockproducts.spx.com](mailto:kelleysales@dockproducts.spx.com) [www.kelleycompany.com](http://www.kelleycompany.com)

A continuing research program is in effect at Kelley. We reserve the right to incorporate product improvement at any time without prior notice.

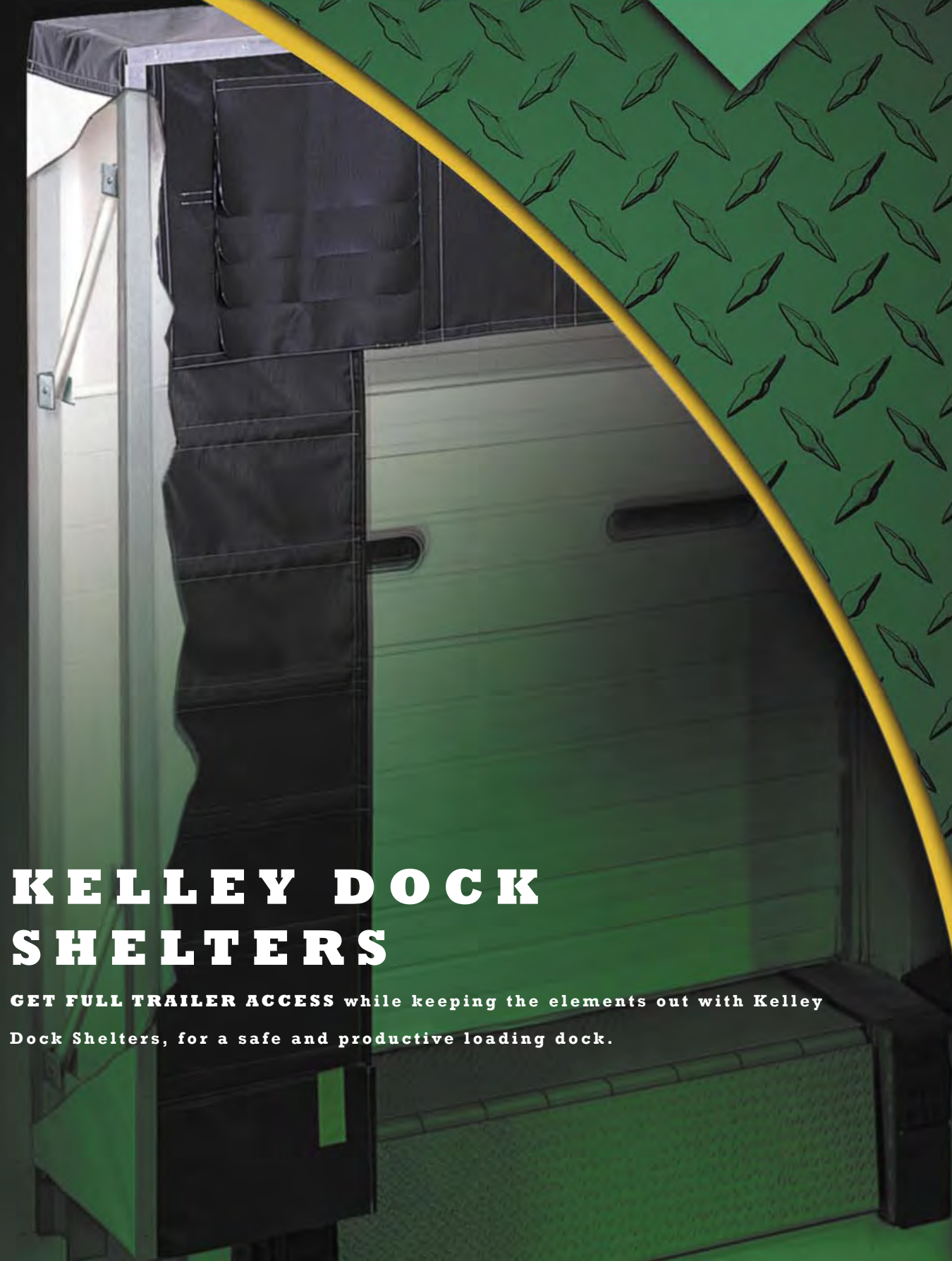
© 2005 SPX Dock Products

Form# KCB101-05



## **KELLEY DOCK SHELTERS**

**GET FULL TRAILER ACCESS** while keeping the elements out with Kelley Dock Shelters, for a safe and productive loading dock.





# Kelley FlexFrame® Dock Shelter:

## Versatile, Full-Access Loading With Low Ownership Costs.

**KELLEY FLEXFRAME DOCK SHELTERS** service a wide variety of trailer sizes and types, providing full trailer access during the loading process while minimizing ownership costs. The secret is Kelley's gravity-biased, flexible frame. It yields to misguided trailers, preventing costly building and shelter damage.



- ① Reinforced top cover provides strength and flexibility. (45 degree sloped top is available as an option for heavy snow and rain environments)
- ② Overlapping wear pleats sewn to the head curtain provide extra resistance against the sharp corners of the trailer, extending the life of the shelter.
- ③ Roll formed Tufsteel® galvanized steel boxed framing (5 year limited warranty)
- ④ Flexible fiberglass stays ensure that the head and side curtain pressure is maintained on the trailer body.
- ⑤ Reinforced, translucent vinyl side covers, allow natural light to enter the dock area.
- ⑥ FlexFrame® maintains a downward tendency due to the gravity biased design, providing a tight curtain seal against the trailer, even when trucks are positioned off-center.

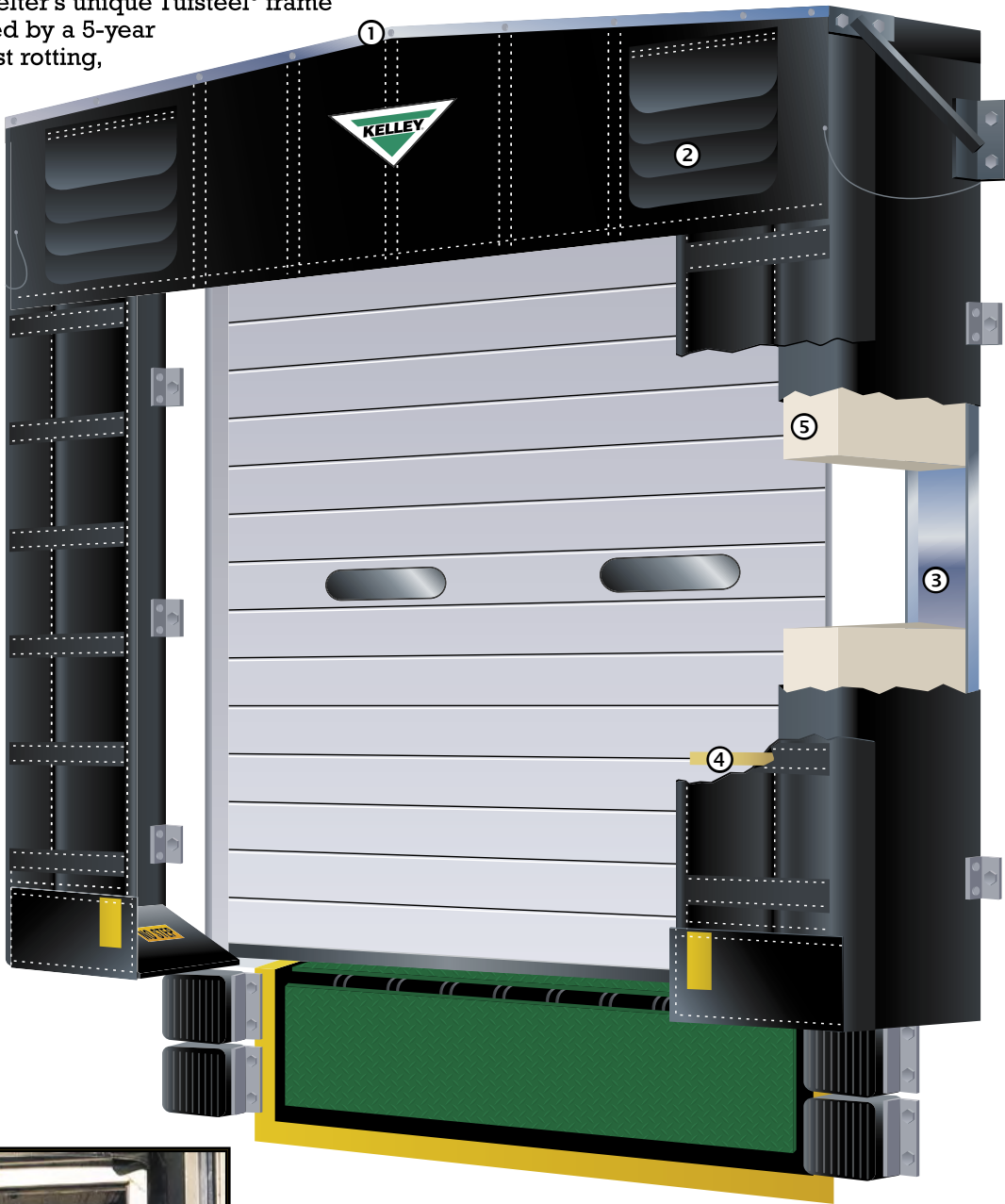


**HOW IT WORKS:**  
As the trailer approaches, if off-center trailer contact occurs, the FlexFrame moves upward and back to prevent costly damage to the wall and shelter. After the trailer leaves, a gravity-biased design returns the frame to its original position.



# Kelley FSR Series Foamside® Dock Shelter

**THE KELLEY FOAMSIDE DOCK SHELTER** combines the flexibility of a seal and the full trailer access of a shelter. The FSR Series effectively keeps the outside elements, such as the cold, rain, sleet and snow, out of the warehouse, providing energy savings and added comfort for your employees. The Foamside Dock Shelter's unique Tufsteel® frame components are covered by a 5-year limited warranty against rotting, cracking or warping.



- ① A raked translucent head frame protects the dock area from weather elements while allowing natural light to enter the dock area.
- ② Overlapping wear pleats provide more wear resistance against the sharp corners of the trailer, extending the life of the shelter.
- ③ Roll-formed Tufsteel® galvanized steel framing (5-year limited warranty).
- ④ Flexible fiberglass stays ensure that head and side curtain pressure is maintained on the trailer body while compressible neoprene cords conform to the vehicle's irregular perimeter.
- ⑤ Heavy-duty impactable foam side member.



When the trailer is backed into position, no foam or fabric impedes the doorway, providing clear and unobstructed access to the trailer.

# Kelley TS Series Rigid Frame Dock Shelter

**THE TS SERIES RIGID FRAME SHELTER** is designed to accommodate a wide variety of door and trailer sizes while providing full-width access to the back of the trailer.



- ① Head frame covered with translucent fiberglass with 2" side-to-side rake for water drainage.
- ② Overlapping wear pleats sewn to the head curtain provide extra resistance against the sharp corners of the trailer, extending the life of the shelter.
- ③ Roll-formed Tufsteel® galvanized steel framing (5-year limited warranty).
- ④ Flexible fiberglass stays ensure that the head and side curtain pressure is maintained on the trailer body.
- ⑤ High-visibility guide stripes assist drivers with proper positioning of trailer.
- ⑥ Steel supports protect frame from off-center trailers.