

THE BUG BLOCKER®

OVERHEAD SCREEN DOOR SYSTEM

Summer's heat can often drive you to open your overhead loading dock doors, just to keep your employees comfortable and working. But this also provides an open invitation to every bird, bee, mosquito, and rodent in the vicinity. Open doors can also lead to the loss of your valuable goods and inventory. If you need a cost effective way to add security, pest control, and ventilation to your facility—there's The Bug Blocker.

The Bug Blocker Overhead Screen Door System is *added to your existing overhead door system*. Using your present door's vertical tracks, we add a switch mechanism, a second set of horizontal tracks, and a screen door with stainless steel wire mesh that meets Federal Specification Standards. *A fine screen mesh size for food industry applications is also available!* The Bug Blocker lets the cool breezes in, and keeps nasty pests and insects out. **The Bug Blocker Product Family will aid your AIB, ASI, HACCP, IPM, and Homeland Security programs.**



VERTICAL LIFT MODEL

(Track Switch Shown In Photo)

The Bug Blocker Features:

- * Aluminum frame construction
- * Standard commercial grade hardware
- * Innovative switch design allows The Bug Blocker to be used in conjunction with the existing overhead door system
- * Stainless steel wire mesh that meets Federal Specification STD A-A-1037B
.023" 12 X 12 mesh for security doors
.011" 30 X 30 mesh for food applications
- * Torsion spring kit included

The Bug Blocker Options:

- * Dual track installations
- * Anodized aluminum frame
- * Professional installation is available and recommended by the manufacturer

The Bug Blocker Models:

- * High Lift
- * Standard Lift
- * Vertical Lift
- * Side Sliding
- * Rolling Steel



* A.I.B. (American Institute of Baking)
A.S.I. (American Sanitation Institute)
Results currently being documented

The Bug Blocker is a trademark of
Rasco Industries, Inc., Patents Pending

NEW HOMELAND SECURITY PRODUCT

OVERHEAD CHAIN-LINK SECURITY DOOR™

Summer's heat can often drive you to open your loading dock doors, just to keep employees comfortable and working. But open doors can cause security problems that can allow unauthorized access to your building and lead to the loss of your valuable goods and inventory. If you need a cost effective way to add security, cooling, and ventilation to your facility — there's the Overhead Chain-Link Security Door.

This newest member of The Bug Blocker Product Family is added to your existing overhead door system. Using a track switch or a second track set, we add an overhead, galvanized steel, chain-link door that stores up and out of the way when not in use. A slide lock and other features enhance your facility's ability to meet the new *Homeland Security Guidelines*.



OVERHEAD CHAIN-LINK SECURITY DOOR

(Dual Track Model Shown In Photo)

SECURITY DOOR FEATURES:

- Aluminum frame construction
- Standard commercial grade hardware
- 2-inch diamond galvanized steel mesh
- Includes all installation hardware
- Innovative switch design or dual track

SECURITY DOOR MODELS:

- Vertical Lift
- High Lift
- Behind Rolling
- Side Sliding
- Stand-Alone

SECURITY DOOR OPTIONS:

- Dual Track Model
- Switch Track Model

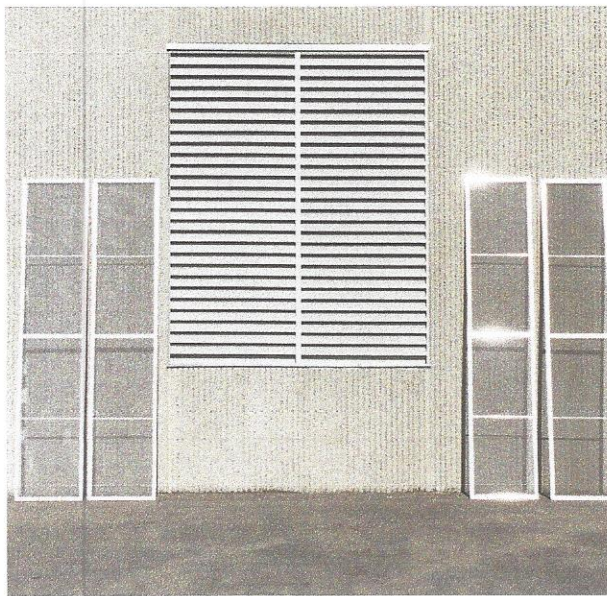
THE BUG BLOCKER®

AIR INLET SCREEN PANEL

Outside air openings and louvers are important devices in providing a healthy environment in a commercial facility. A major drawback in many air inlet systems is with the bug screening component. Most openings have an aluminum screen that is permanently mounted inside the building. This makes cleaning the screen extremely difficult. Cleaning crews need to use air or water pressure from inside the building to remove debris from the screen. This can create water or dust problems, and wastes valuable storage space around the air inlet opening. If you are looking for a more cost effective solution to this problem—there's The Bug Blocker.

The Bug Blocker Air Inlet Screen Panel is mounted outside the building using special brackets. Screen sections can be easily handled by one maintenance person. Removal for routine cleaning, and reinstallation is simple. The aluminum extrusion frame is strong, corrosion resistant, and the screen material is a tough stainless steel wire mesh that meets all Federal Specification Standards. *A fine screen mesh for food industry applications is also available!* The Bug Blocker lets fresh air in, and keeps nasty pests and insects out. **The Bug Blocker Product Family will aid your AIB, ASI, HACCP, and IPM compliance programs!***

BEFORE



AFTER



The Bug Blocker Features:

- * Aluminum frame construction
- * Stainless steel wire mesh that meets
- * Federal Specification STD A-A-1037B
 - .023" 12 X 12 mesh for standard use
 - .011" 30 X 30 mesh for food applications
- * Can be removed for cleaning by one person

* A.I.B. (American Institute of Baking)
A.S.I. (American Sanitation Institute)
Results currently being documented

The Bug Blocker is a trademark of
Rasco Industries, Inc. Patents Pending

The Bug Blocker Models:

- * Insert Mount
- * Surface Mount



THE BUG BLOCKER®

SERVICE DOOR SCREEN INSERT

Summer's heat can often drive you to leave your service doors open, just to keep your employees comfortable and working. This provides an open invitation to every bird, bee, mosquito, and rodent in the vicinity. Open doors can also lead to the loss of your valuable goods and inventory. If you need a cost effective way to add security, pest control, and ventilation to your store, distribution warehouse, bakery, food processing plant, print shop, or manufacturing facility—there's The Bug Blocker.

The Bug Blocker Service Door Screen Insert can be *retrofitted into your existing service doors*. It can be installed by one of our dealers or by your own plant maintenance personnel. The product's construction of aluminum frame and stainless steel wire mesh is designed to withstand the rigors of the toughest industrial environments. *A fine screen mesh size for food industry applications is also available!* Add an optional clear lexan panel for outdoor viewing or insulated steel panel for cold weather comfort. The Bug Blocker lets the cool breezes in, and keeps nasty pests and insects out. **The Bug Blocker Product Family will aid your AIB, ASI, IPM, HACCP, and Homeland Security compliance programs!***



Screen Insert Features:

- * Can be dealer or plant maintenance personnel installed
- * Fits all standard service doors
- * Aluminum frame construction
- * Frames secured by tamper proof headed screws
- * Stainless steel wire mesh that meets Federal Specification STD A-A-1037B
.023" 12 X 12 mesh for security doors
.011" 30 X 30 mesh for food applications
- * Can be mounted above and/or below the panic opener (up to two per door)

Screen Insert Options:

- * Solid Insert Panel - 22 gauge powder coated steel with 1 inch of insulation
- * Clear Insert Panel- 3/8 inch clear lexan panel for outside viewing
- * Storage brackets
- * Security bars



Service Door Screen Insert

(With Solid Insert Panel In Storage Rack)

* A.I.B. (American Institute of Baking)
A.S.I. (American Sanitation Institute)
Results currently being documented

The Bug Blocker is a trademark of
Rasco Industries, Inc., Patents Pending